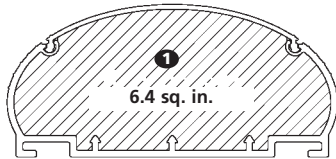


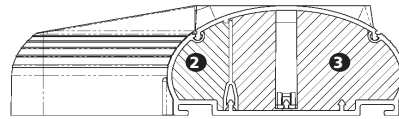
# HellermannTyton

INSMCR Rev.3

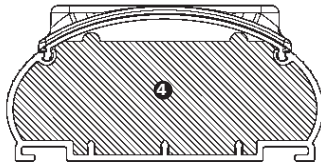
## INSTALLATION INSTRUCTIONS FOR INFOSTREAM™ MULTI-CHANNEL RACEWAY SYSTEM



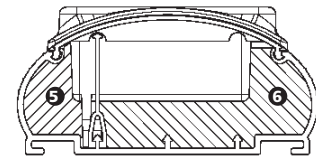
Base and Cover with No Devices



Offset Box with Data (OB)



Data Only using Raised Bracket (RDB)



Power and Data Inline using Raised  
Brackets (REB, RDB)

### WIRE FILL CAPACITY CHART

LOW VOLTAGE		Raceway Area of Raceway	Channel 1 6.40in <sup>2</sup>	Channel 2 1.220in <sup>2</sup>	Channel 3 4.260in <sup>2</sup>	Channel 4 5.880in <sup>2</sup>	Channel 5 0.800in <sup>2</sup>	Channel 6 2.450in <sup>2</sup>		
Wire Type	Wire Size	OD of Wire	Spec	Max	Spec	Max	Spec	Max	Spec	Max
Twisted Pair 24 AWG Unshielded	4 Pr. Cat 5e	0.217	69	103	13	19	46	69	63	95
	4 Pr. Cat 6	0.240	56	84	10	16	37	56	51	77
	4 Pr. Cat 6a	0.354	26	39	4	7	17	25	23	35
Electrical Wire	14 AWG THHN	0.105		30		21		-		27
	12 AWG THHN	0.122		25		15		-		22
	10 AWG THHN	0.153		19		9		-		17

Formula used to calculate communications wire fill capacity - Numbers of wires = duct /  $\{1/4 \times 3.14 \times (\text{wire o.d.})^2\} \times 0.4$  or  $0.6$ .

Per ANSI/TIA/EIA-569-A:

SPEC = 40% fill which is recommended for planning perimeter pathways

MAX (for data) = 60% fill which is allowed to accommodate unplanned additions after initial installation

MAX (for power) = Maximum number determined by UL temperature testing

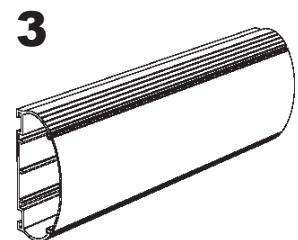
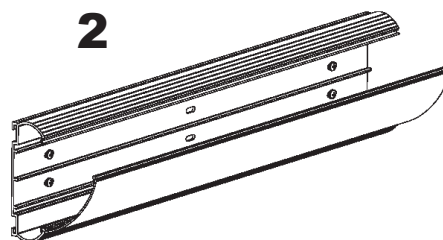
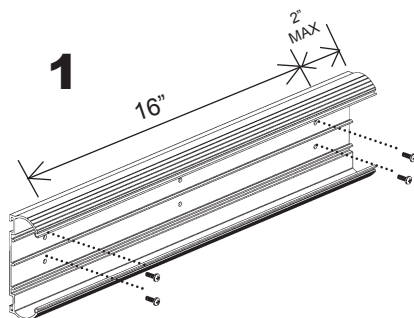
Note: It is recommended to place electrical cables loosely in raceway

## BASE AND COVER

Part Numbers: MCR\_-B8, MCR\_-B10, MCR\_-C8, MCR\_-C10

Recommend raceway mounted every 16" - 24"

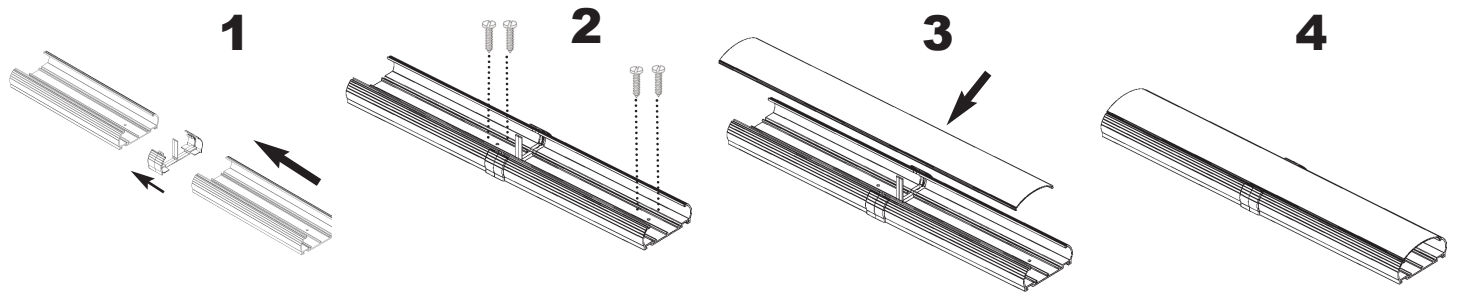
Appropriate mounting hardware should be used to secure the raceway to the mounting surface. Recommend use of #8 round or pan-head screws.



# BASE SPLICE

Part Number: MCR\_BS

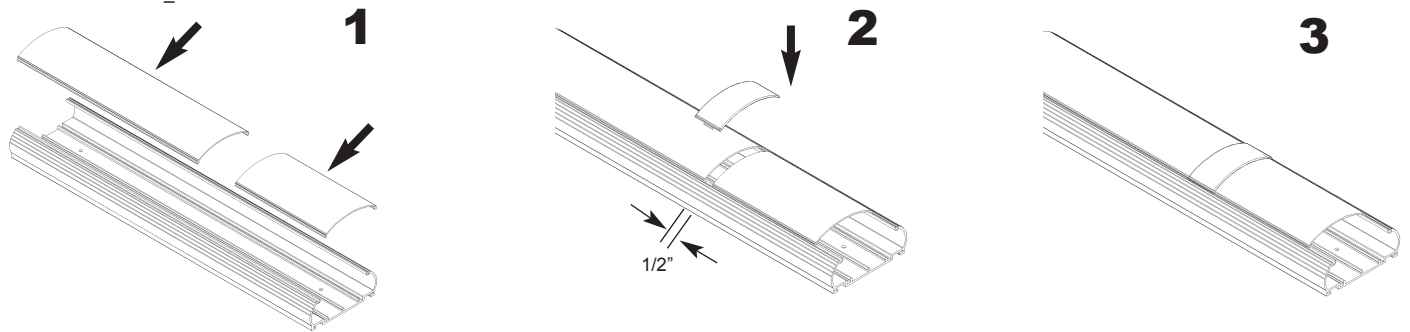
The base splice has a divider built into the middle. This may be snapped off if the side divider is used.



---

# COVER SPLICE

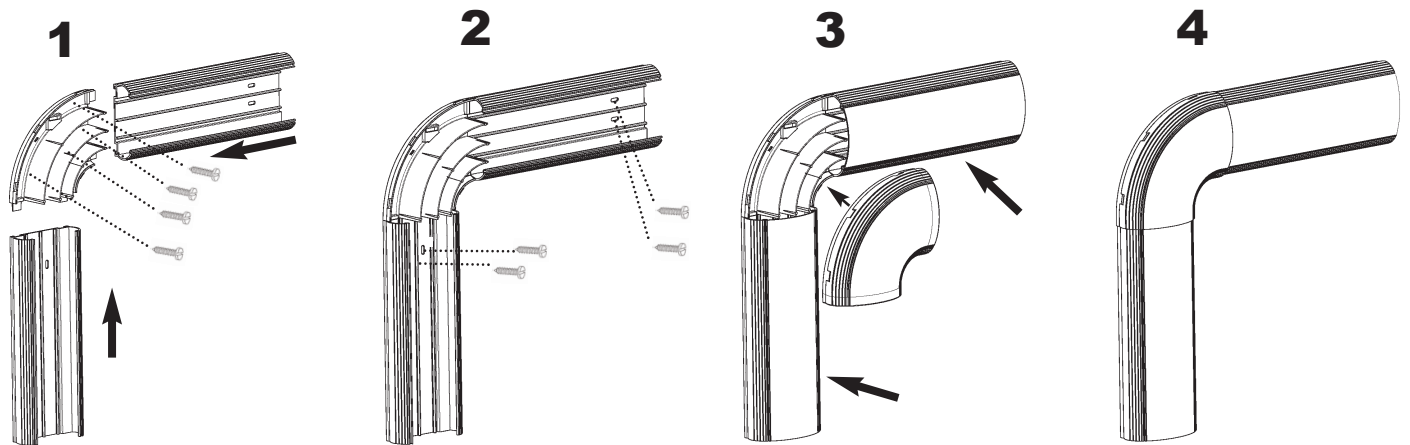
Part Number: MCR\_CS



---

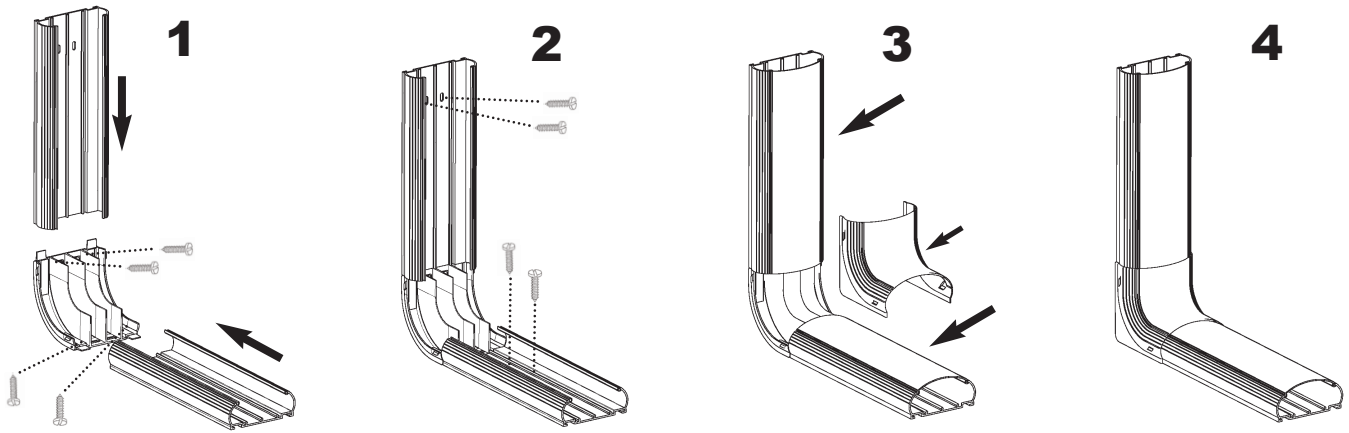
# FLAT ELBOW

Part Number: MCR\_FE



# INTERNAL ELBOW

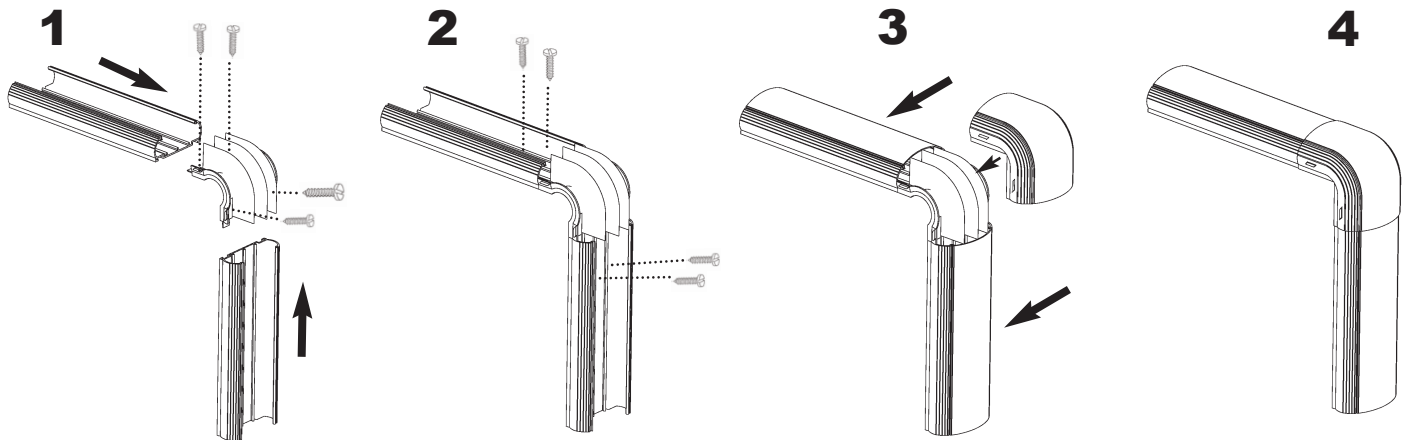
Part Number: MCR\_-IE



---

# EXTERNAL ELBOW

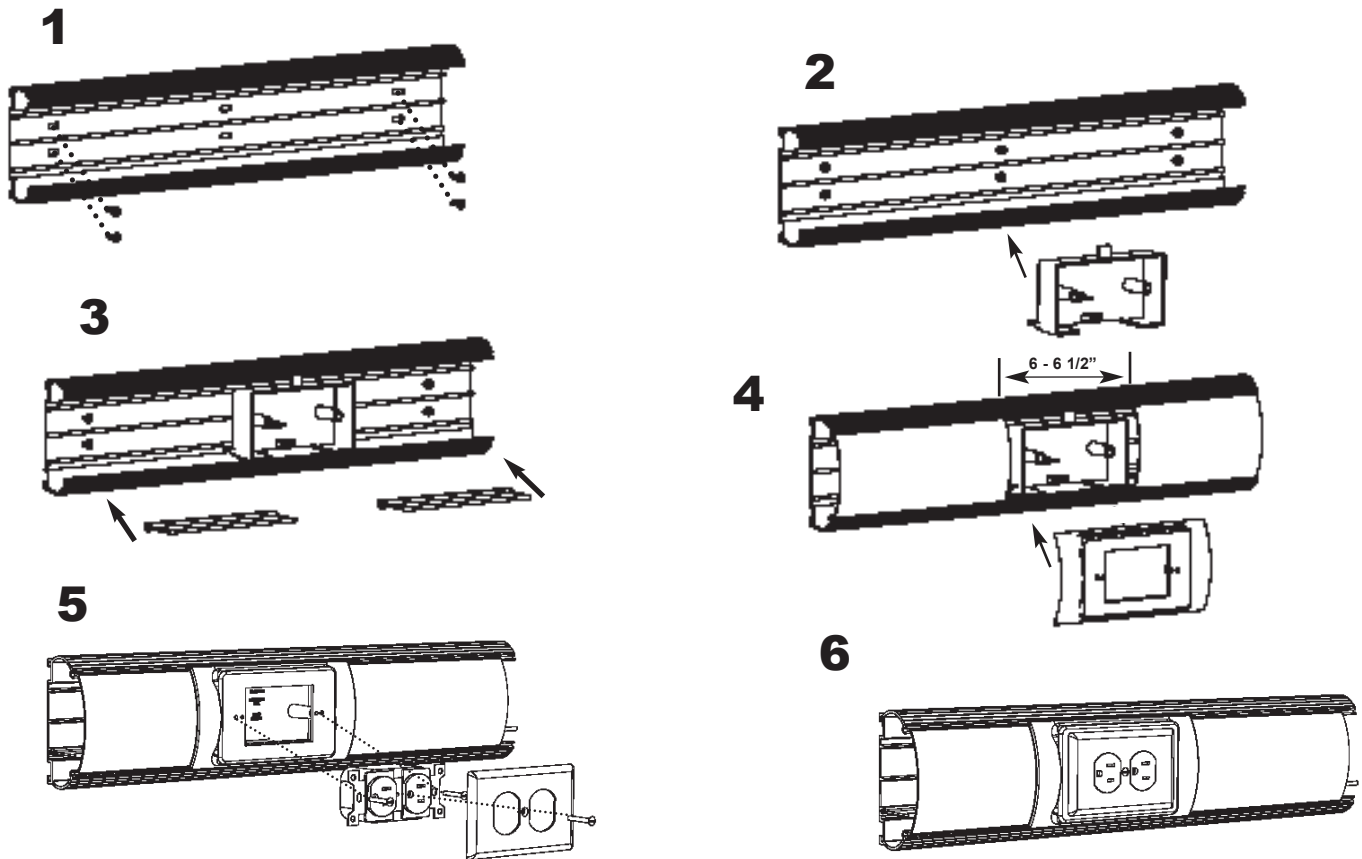
Part Number: MCR\_-EE



# RAISED ELECTRICAL BOX

Part Number: MCR\_REB

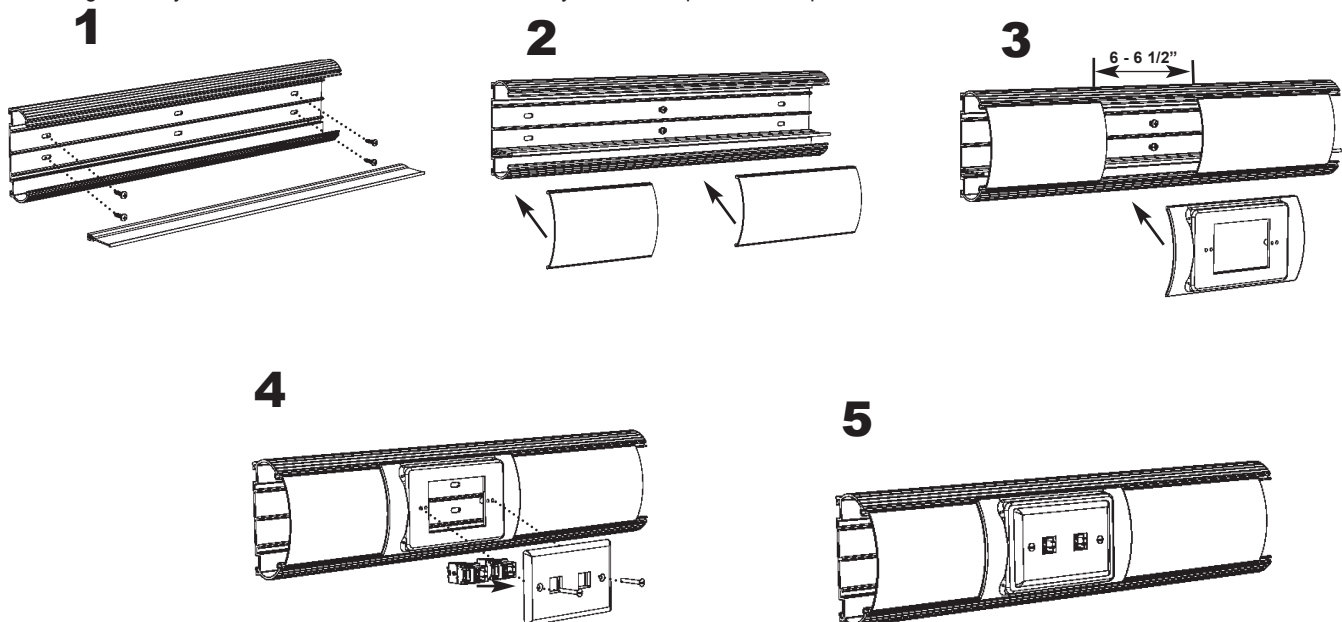
This fitting can only be used with the side divider in raceway. No cover splices are required.



# RAISED DEVICE BRACKET

Part Number: MCR\_RDB

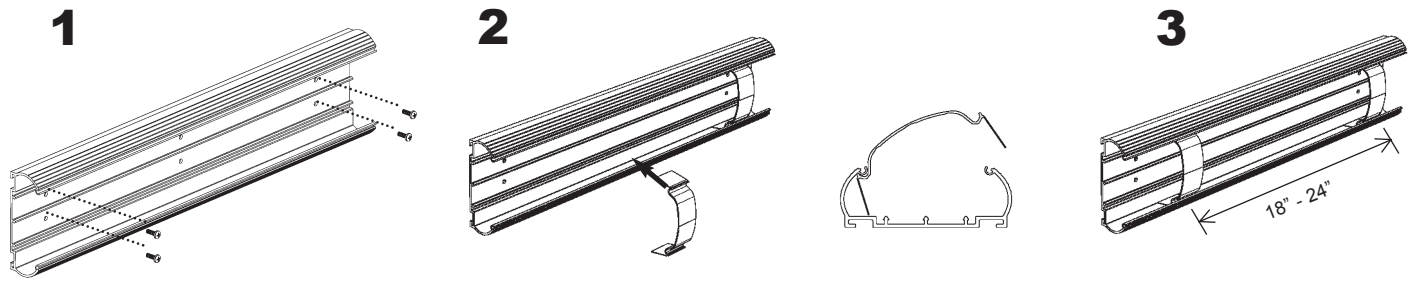
This fitting can only be used with the side divider in raceway. No cover splices are required.



# WIRE RETAINER

Part Number: MCRG-WR

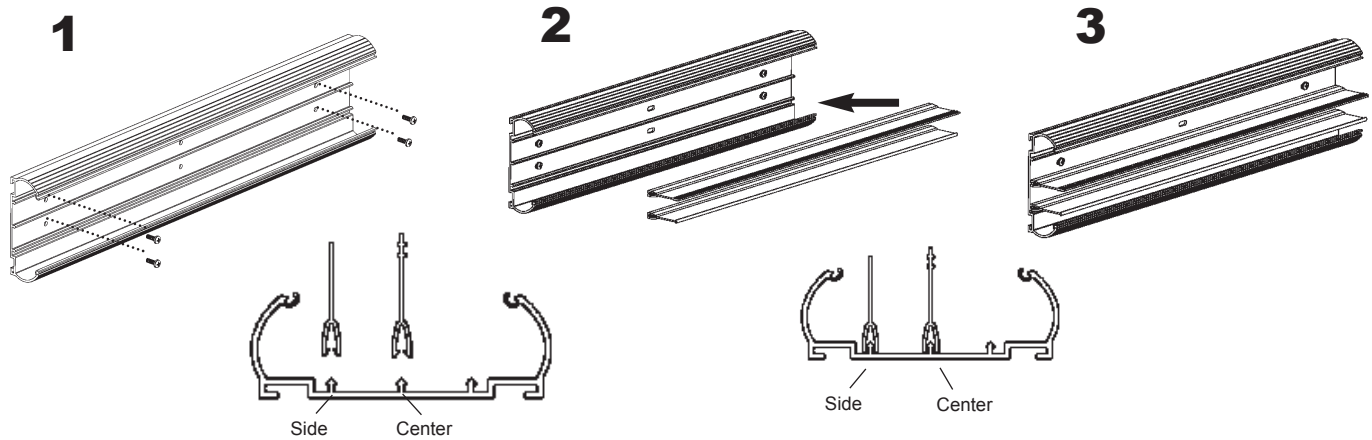
Wire retainers are not required to be used. They are convenient to hold wires in place during installation.



# DIVIDERS

Part Number for Side Divider: MCRW-SD8, MCRW-SD10

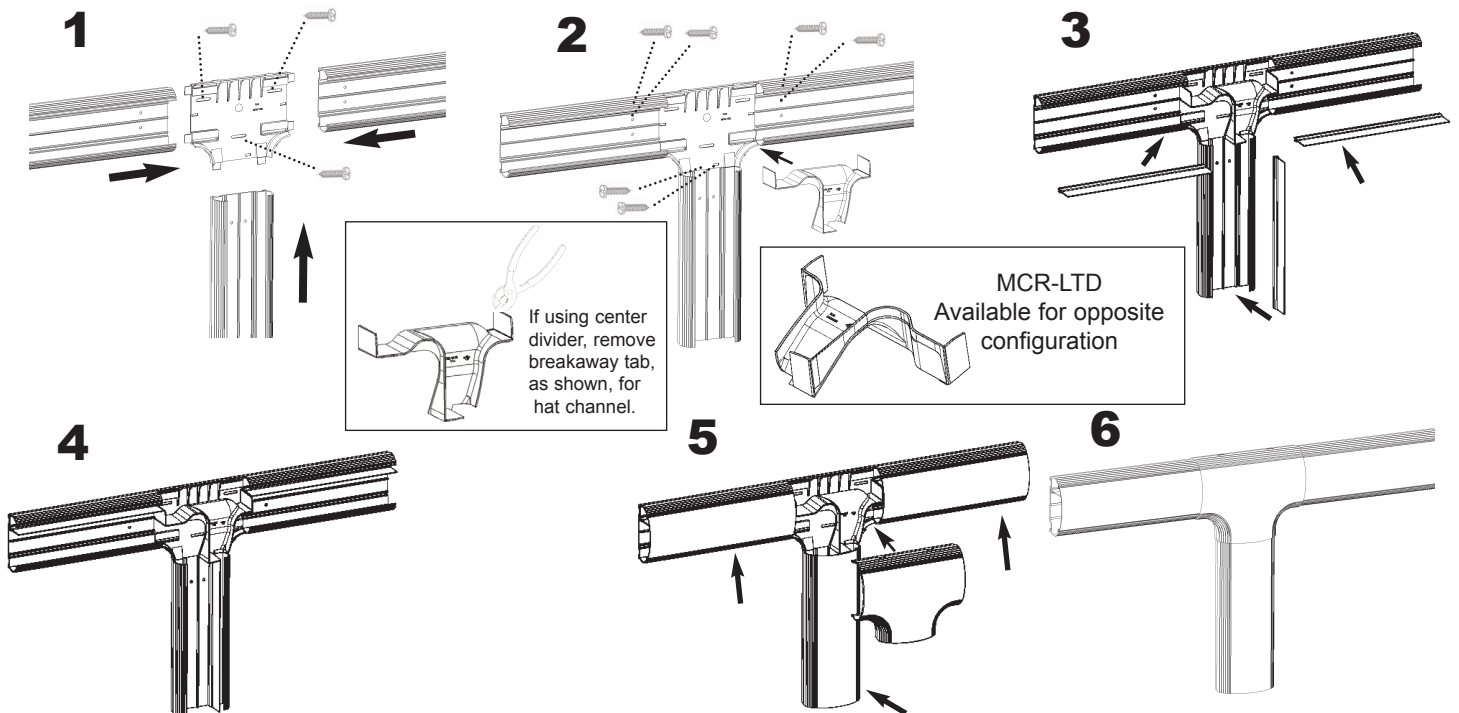
Dividers are snapped into the base on the center or side position to separate the power wires and communication wires. **The center or side divider is included with the base.** The center divider is taller and has rbs near the top. The side divider is always white in color.



# TEE FITTING

Part Number: MCR-TE

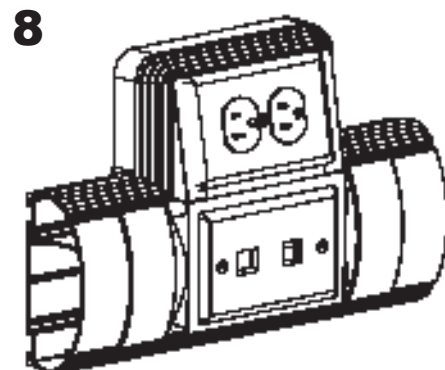
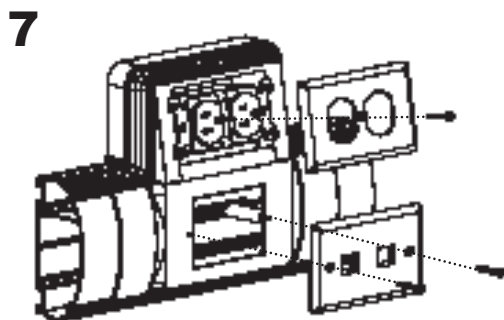
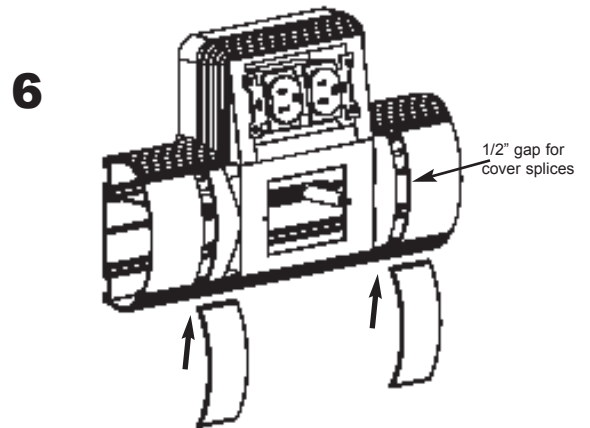
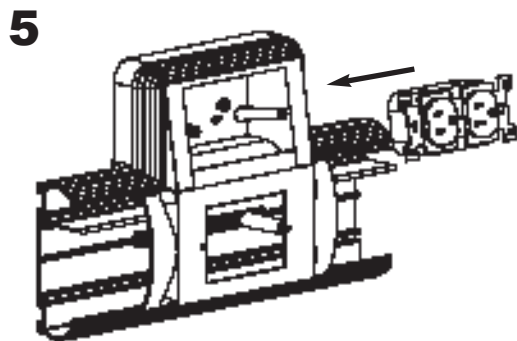
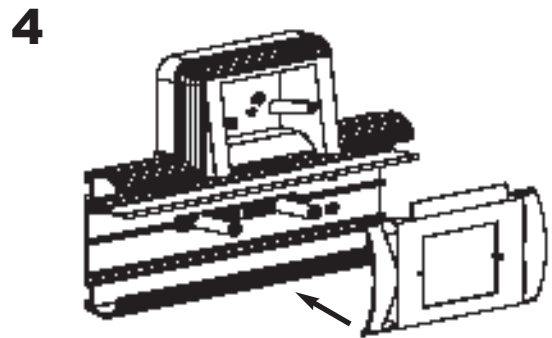
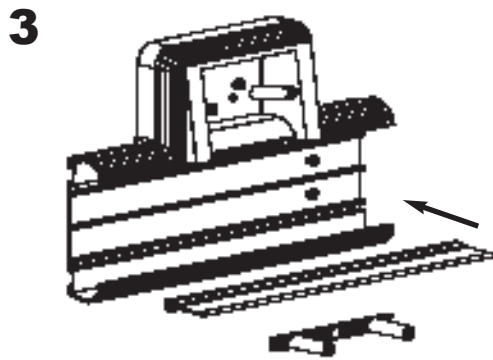
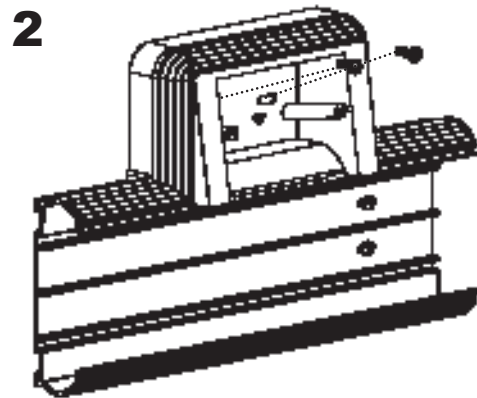
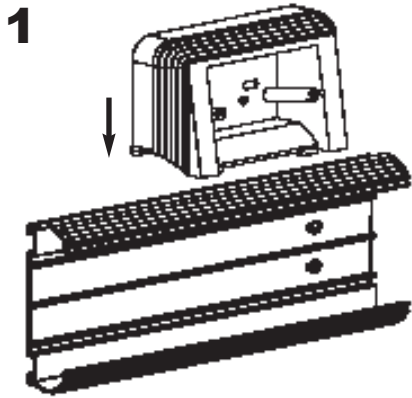
Tee divider required only if installing electrical and communications cables.



# OFFSET BOX

Part Number: MCR\_-OB

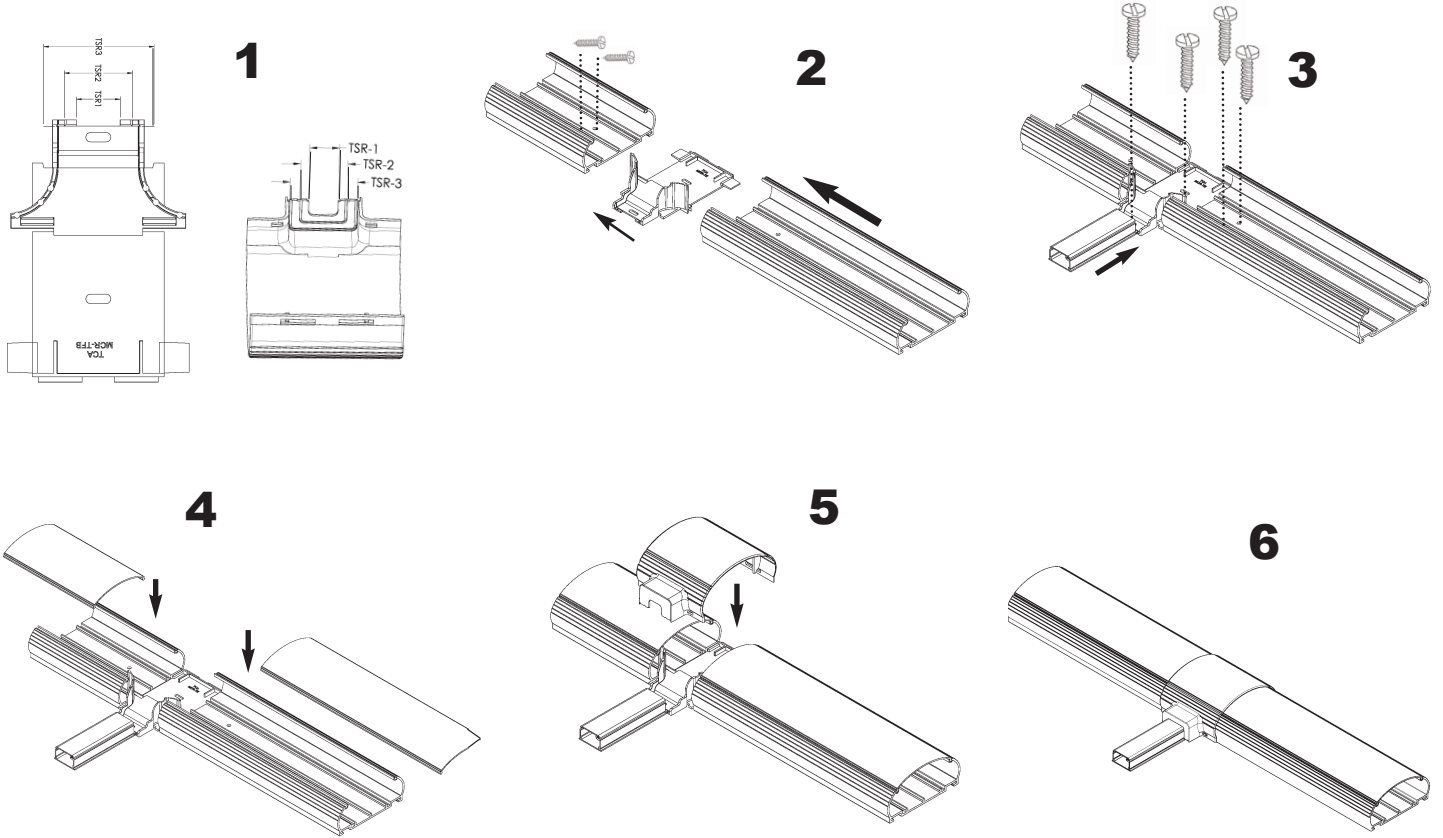
Cover splice is required for proper installation.



# TRANSITION FITTING

Part Number: MCR\_TF

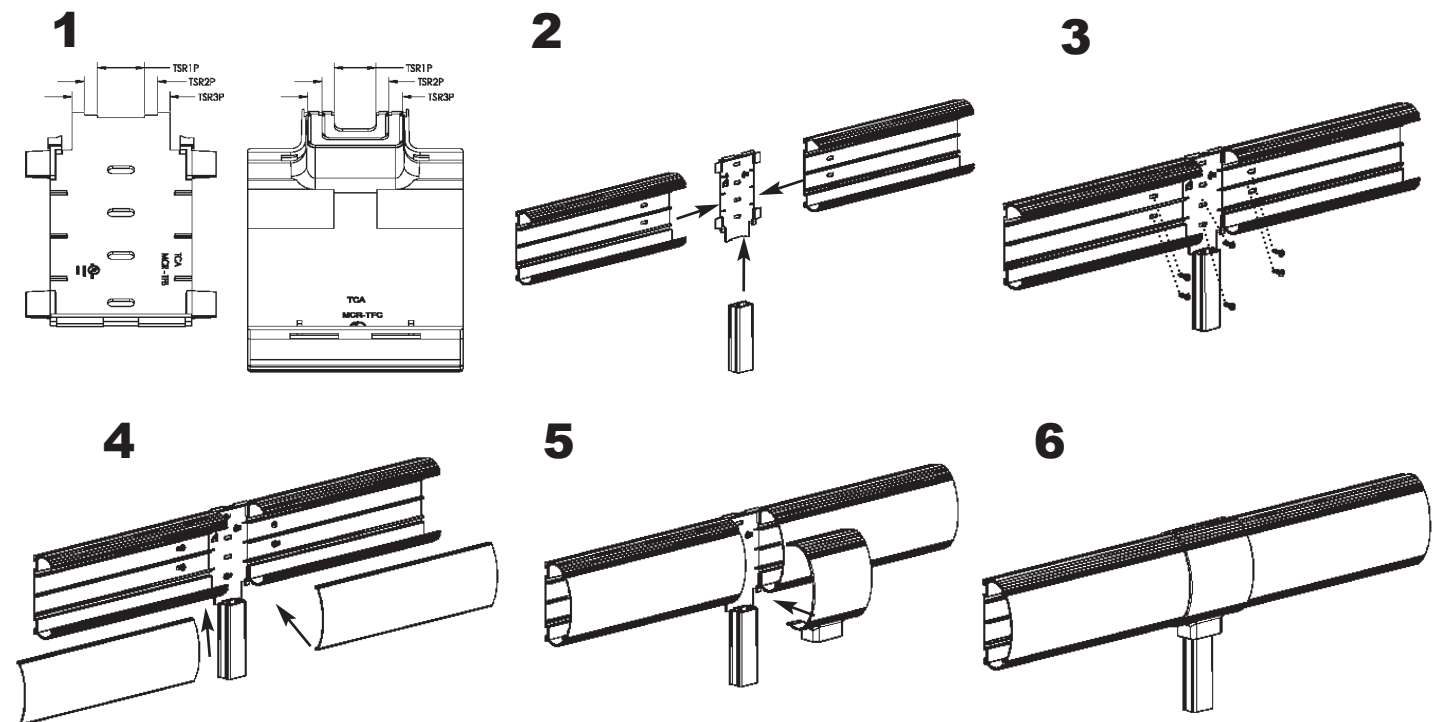
Break off tabs on base and cover with standard pliers to appropriate raceway size.



# POWER TRANSITION FITTING

Part Number: MCR\_PTF

Break off tabs on cover with standard pliers to appropriate raceway size.

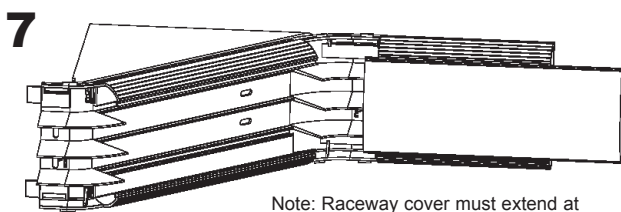
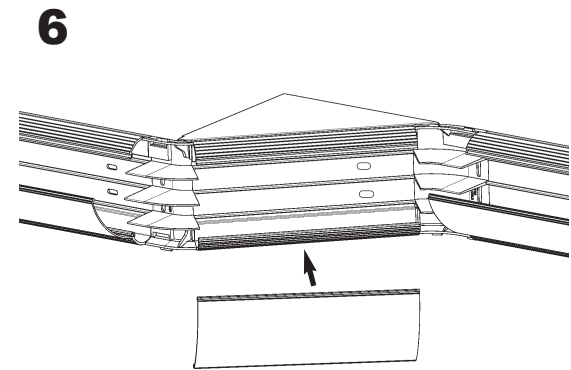
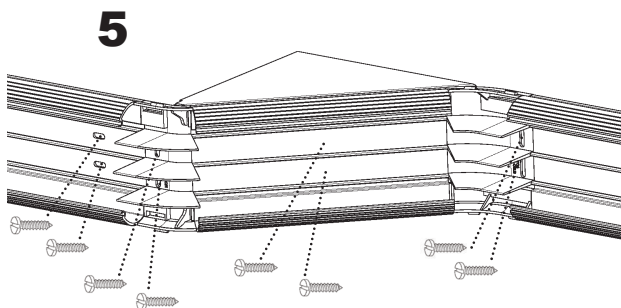
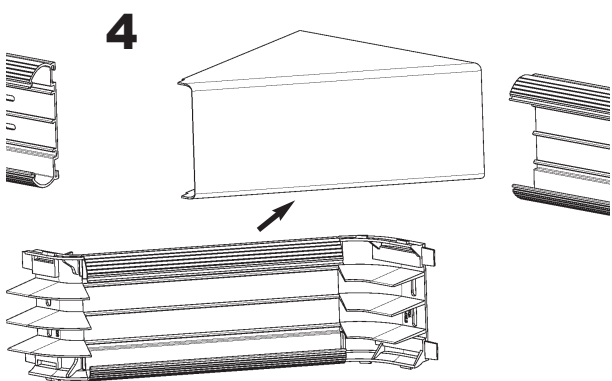
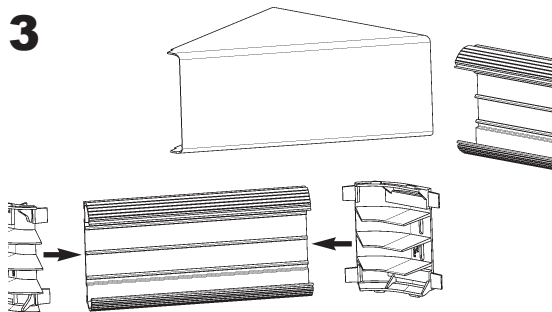
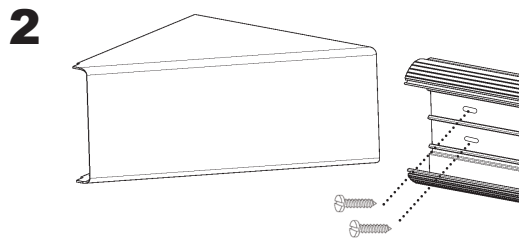
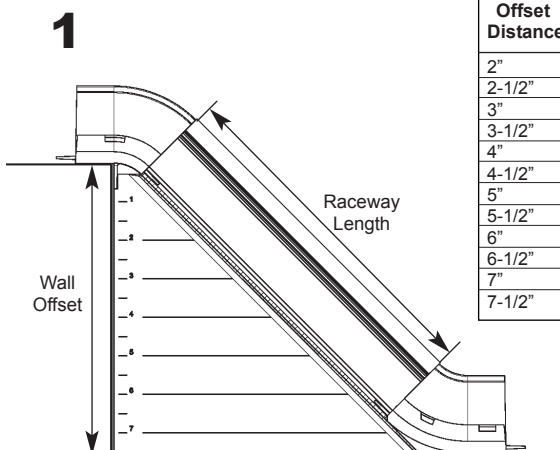


# OFFSET ELBOW

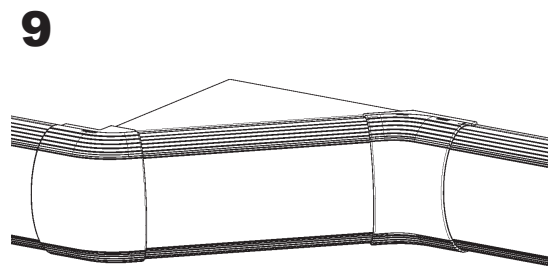
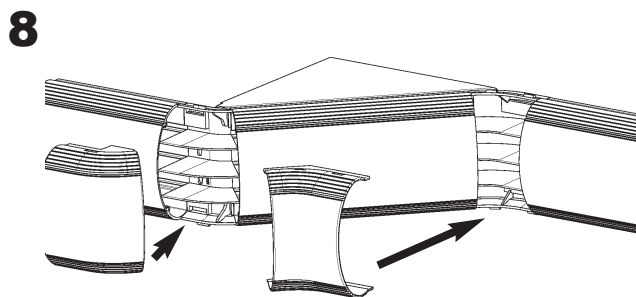
Part Number: MCR\_OE

Cut raceway and corner filler as shown in table.

Offset Distance	Raceway Length	Corner Filler
2"	1-1/8"	2"
2-1/2"	1-7/8"	2-1/2"
3"	2-9/16"	3"
3-1/2"	3-1/4"	3-1/2"
4"	4"	4"
4-1/2"	4-11/16"	4-1/2"
5"	5-3/8"	5"
5-1/2"	6-1/8"	5-1/2"
6"	6-13/16"	6"
6-1/2"	7-1/2"	6-1/2"
7"	8-1/4"	7"
7-1/2"	8-15/16"	7-1/2"

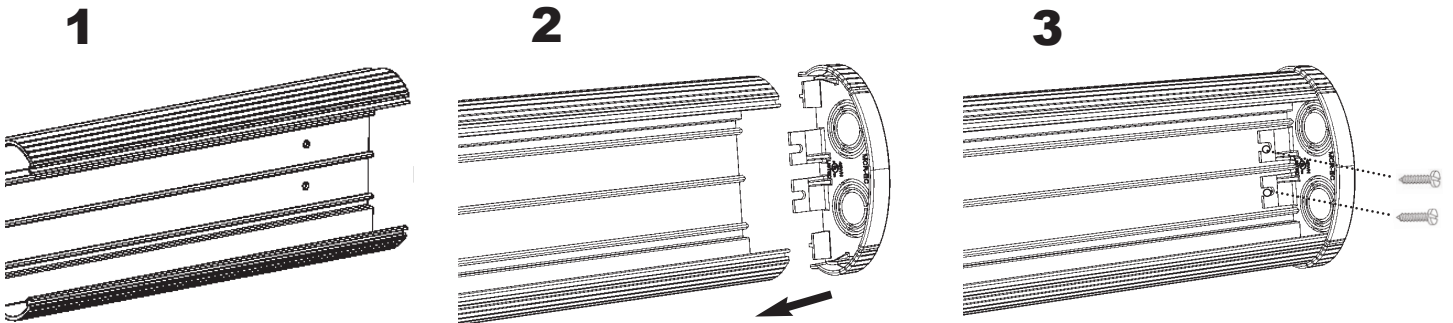


Note: Raceway cover must extend at least 1/4" beyond end of raceway base and rest on top of offset base.



# END CAP

Part Number: MCR\_EC



## END CAP WHEN USED WITH CONDUIT

End cap has knockouts for 1/2", 3/4", and 1" conduit.

